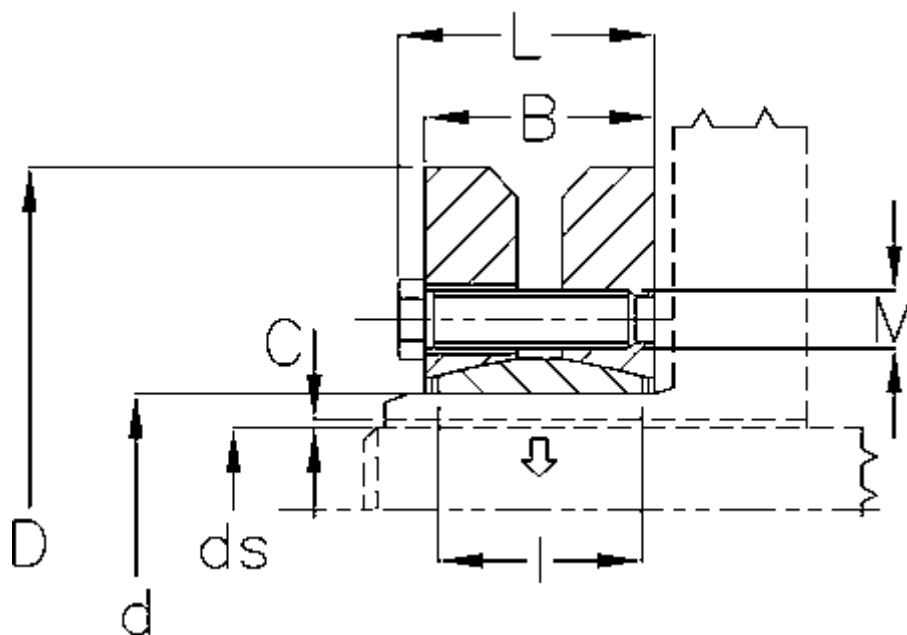


Varenummer: 438000250

Beskrivelse: Rota-fix spændelement SD 250

Mål



B mm	= 108
C maks.	= 0,090
d H8 mm	= 250
D mm	= 405
ds mm	= 180
F kN aksialkraft	= 1600
L mm	= 121
l mm	= 92

M mm	= M20
T Nm drejningsmoment	= 160000
Ts Nm boltetilspændingsmoment	= 490